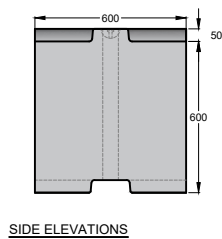
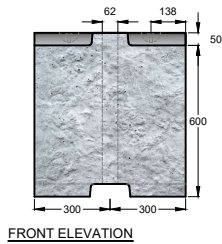
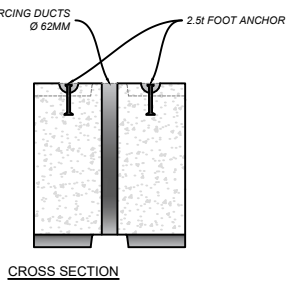
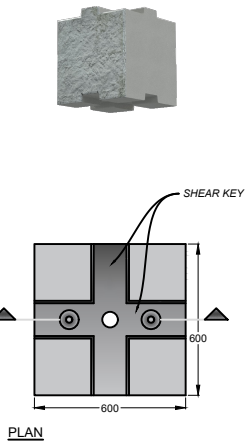


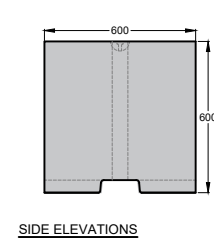
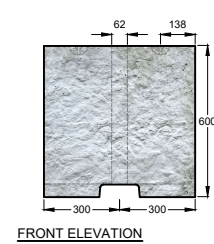
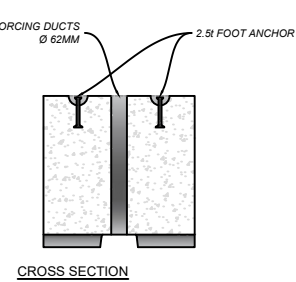
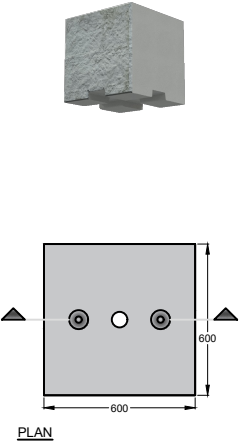
600 STANDARD BLOCK

DESCRIPTION	METRIC
• Width	600 mm
• Height	600 mm
• Depth(±)	600 mm
• Face Area	0.36 m ²
• Volume (±)	0.214 m ³
• Weight (±)	500 kg



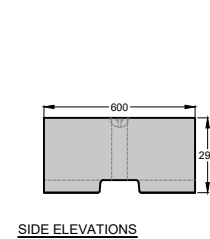
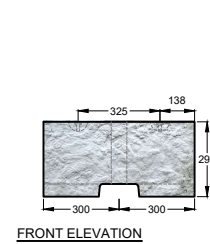
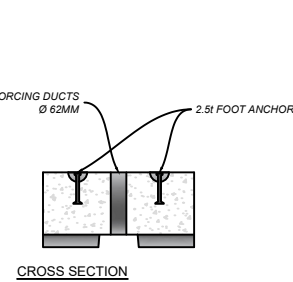
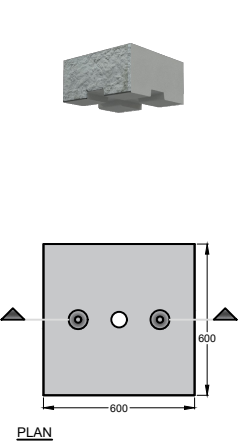
600 FLAT TOP BLOCK

DESCRIPTION	METRIC
• Width	600 mm
• Height	600 mm
• Depth(±)	600 mm
• Face Area	0.36 m ²
• Volume(±)	0.206 m ³
• Weight (±)	500 kg



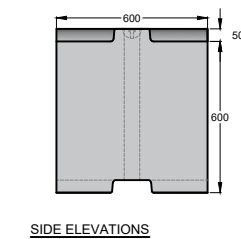
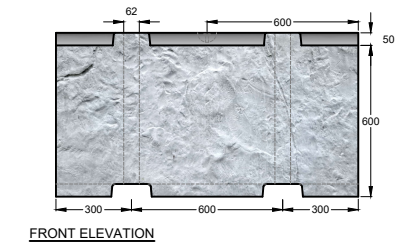
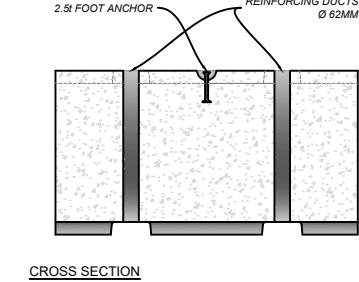
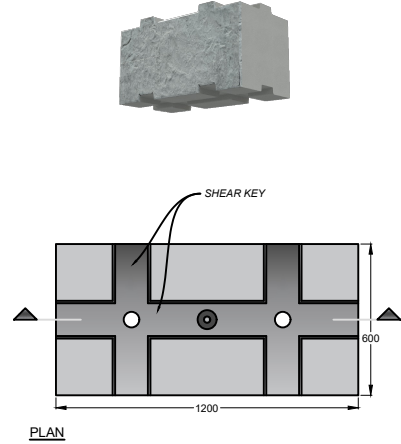
600 HALF FLAT TOP BLOCK

DESCRIPTION	METRIC
• Width	600 mm
• Height	297 mm
• Depth(±)	600 mm
• Face Area	0.18 m ²
• Volume (±)	0.096 m ³
• Weight (±)	220 kg



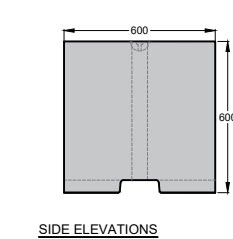
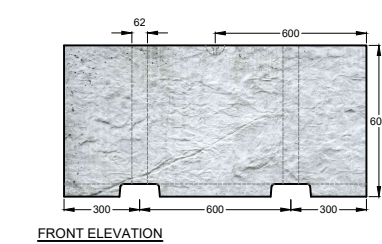
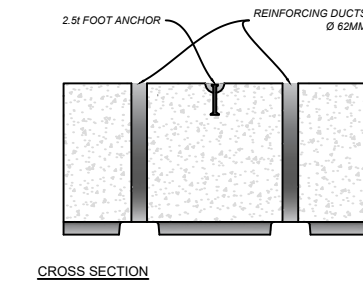
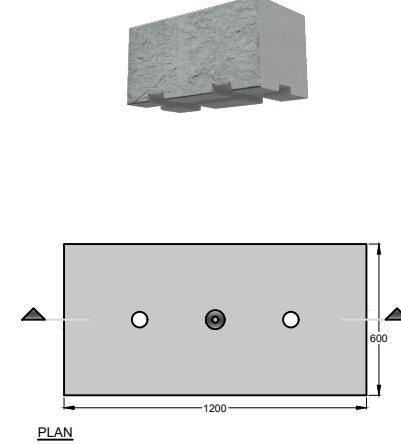
1200 STANDARD BLOCK

DESCRIPTION	METRIC
• Width	1200 mm
• Height	600 mm
• Depth(±)	600 mm
• Face Area	0.72 m ²
• Volume (±)	0.428m ³
• Weight (±)	1.00 TN



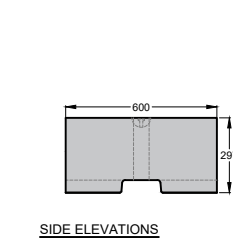
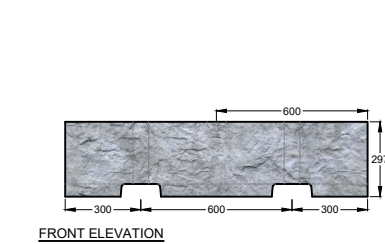
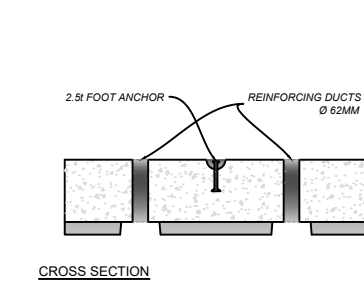
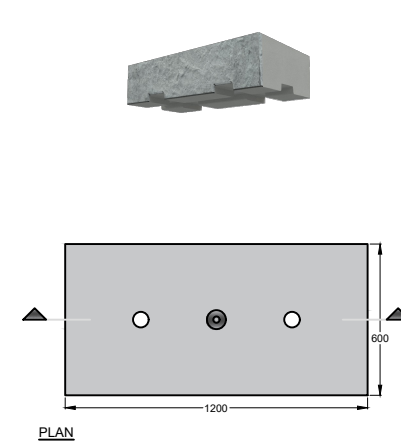
1200 FLAT TOP BLOCK

DESCRIPTION	METRIC
• Width	1200 mm
• Height	600 mm
• Depth(±)	600 mm
• Face Area	0.72 m ²
• Volume (±)	0.413 m ³
• Weight (±)	1.00 TN



1200 HALF FLAT TOP BLOCK

DESCRIPTION	METRIC
• Width	1200 mm
• Height	297 mm
• Depth(±)	600 mm
• Face Area	0.36 m ²
• Volume (±)	0.192 m ³
• Weight (±)	440 kg



GENERAL NOTES:

These drawings are provided solely as preliminary guidance for wall design and are not suitable for final design or construction without further evaluation.

All site-specific walls must be certified and approved by an engineer licensed in the region where construction will occur, in accordance with New Zealand Standards and relevant building codes. Where applicable, building consent should also be obtained.

The user assumes full responsibility for verifying the accuracy and proper application of the details provided in this document.

Density Standards for Weight and Volume Calculations:

Concrete densities typically range from 2200 to 2500 kg/m³ in accordance with standard construction practices. It is important to note that variations in dimensions of 1 to 3 mm may result in different volume calculations, which can subsequently affect the estimated weight. These values are provided as estimates, as actual weights may vary based on the specific concrete mix used, any additives, and adherence to relevant New Zealand standards and policies.

Concrete Type:

Interbloc is primarily manufactured using high quality, certified, excess concrete. 100% of blocks are 20 MPa or greater, and 50% of blocks are 30 MPa or greater. Concrete is tracked from source and each block carries a unique barcode for tracking. You can find out more information about this in our articles on excess concrete, and quality.

Foot Anchor:

2.5t x 120mm SwiftLift™ Foot Anchor
Compliance: NZ GPG 2018
System: Fully engineered with cast-in lifting anchors, recess formers, and lifting clutches
Working Load Limit (WLL): 2.5 TN
Factor of Safety (FoS): 4 for high tensile steel, exceeding NZ GPG 2018 minimum requirements

TITLE:
INTERBLOC® Product Specification and Reference Sheet

- Drawn by Sam Salari
- Checked by
- Approved by
- Scale @ A3 1:300
- Date 08/01/2025
- Sheet IB- 01

ENVIROCON
CAPTURING CONCRETE EXCESS
ENVIROBUILD INTERBLOC

www.envirocon.co.nz
www.envirobuild.co.nz
Address: 667B Great South Road,
Penrose, Auckland 1061
Phone: 0800 468 375